



U-Kaffee

ESPRESSO COFFEE MACHINE

OPERATING & SAFETY INSTRUCTIONS

INSTRUCTION MANUAL

Read these instructions carefully before using your Espresso Coffee machine

SAVE THESE INSTRUCTIONS CAREFULLY

Please read this manual carefully before you use the appliance and save it for future reference.

This appliance is not intended to be used in household and similar applications such as:

- Staff kitchen areas in shops, offices and other working environments.
- In hotels, motels and other residential type environments.

IMPORTANT SAFEGUARDS

Before using the electrical appliance, the following basic precautions should always be followed including the following:

1. Read all instructions.
2. Before using check that the voltage of the wall outlet corresponds to the rated voltage marked on the rating plate.
3. This appliance has been incorporated with a grounded plug. Please ensure the wall outlet in your house is well-earthed.
4. To protect against fire, electric shock, and injury to persons do not immerse the cord, plug, water, or other liquid.
5. Remove the plug from the wall outlet before cleaning and when not in use. Allow the appliance to cool down completely before taking off, attaching components, or before cleaning.
6. Do not operate any appliance with a damaged cord or plug or after the appliance malfunctions or is dropped or damaged in any manner. Return the appliance to the nearest authorized service facility for examination, repair, or electrical or mechanical adjustment.
7. The use of accessory attachments not recommended by the appliance manufacturer may result in fire, electric shock, or injury to persons.
8. Place the appliance on a flat surface or table, do not hang the power cord over the edge of the table or counter.
9. Ensure the power cord does not touch the hot surface of the appliance.
10. Do not place the coffee maker on a hot surface or beside the fire in order to avoid damage.
11. To disconnect, turn any control to "off," then remove the plug from the wall outlet. Always hold the plug. But never pull the cord.
13. Close supervision is necessary when your appliance is being used by or near children.

14. Be careful not to get burned by the steam.
15. Do not touch the hot surface of the appliance (such as the steam wand, and the brewing filter during operation). Use handles or knobs.
16. Do not let the coffee maker operate without water.
17. Scalding may occur if the water tank is removed during the brewing cycles.
18. Do not remove the metal funnel when the appliance is brewing coffee or when steam and hot water escape from the metal funnel and ensure to release of the pressure in the water tank before removing the metal funnel.
19. Connect the plug to the wall outlet before using and turn any switch off before the plug is removed from the wall outlet.
20. Relief pressure through the steam wand before removing the tank cover or metal funnel.
21. This appliance is not intended for use by persons (including children) with reduced physical, sensory or mental capabilities, or lack of experience and knowledge unless they have been given supervision or instruction concerning the use of the appliances by a person responsible for their safety.
22. Children should be supervised to ensure that they do not play with the appliance.
23. This appliance is not intended to be used in household and similar applications such as:
 - staff kitchen areas in shops, offices, and other working environments;
 - farmhouses;
 - by clients in hotels, motels, and other residential-type environments;
 - bed and breakfast type environments.
24. Do not use outdoors.
25. Do not place the appliance on or near a hot gas or electric burner, or in a heated oven.
26. If the supply cord is damaged, it must be replaced by the manufacturer, its service agent, or similarly qualified persons.
27. **WARNING:** The filling aperture must not be opened during use.
28. The heating element surface is subject to residual heat after use.
29. The coffee maker shall not be placed in a cabinet when in use.
30. Cleaning and user maintenance shall not be made by children without supervision.
31. This appliance is not intended to be operated by means of an external timer or a separate remote-control system.
32. This appliance can be used by children aged 8 years and above if they have

been given supervision or instruction concerning the use of the appliance in a safe way and if they understand the hazards involved.

33. Appliances can be used by persons with reduced physical, sensory or mental capabilities or lack of experience and knowledge if they have been given supervision or instruction concerning the use of the appliance in a safe way and understand the hazards involved

SAVE THESE INSTRUCTIONS CAREFULLY

KNOW YOUR COFFEE MAKER

(Product may be subject to change without prior notice)



BEFORE FIRST USE

To ensure the first cup of coffee tastes excellent, you should rinse the coffee maker with warm water as follows:

1. Remove the plug at the bottom of the tank.
2. Pour water into the water tank, the water level should not exceed the "MAX" mark in the water tank. Then close the tank cover.

Note: The appliance comes with a water tank for easy cleaning, you can fill the water tank with water and then put the water tank into the appliance.

3. Set the brewing filter into the metal funnel (with no coffee powder in the brewing filter).

4. Place an espresso cup on the drip plate. Make sure the knob is at the horizontal position(off-position).

Note: the appliance doesn't come with a jug, please use your jug or coffee cup.

5. Connect to the power source, press the power button "⏻". The power indicator will be illuminated and single/double-cup/steam indicator will be flashing.

6. The appliance will start heating, when single/double-cup/steam indicator stops flashing, it shows the pre-heating is finished. Press double-cup button "☺", wait for a moment, the water will flow out.

7. When the appliance stops pumping water automatically, you can pour the water in container out and then clean them thoroughly, now you can start brewing.

Note: There may be noise when pumping the water during initial use, it is normal, the appliance is releasing the air in the appliance. After about 20 seconds, the noise will disappear.

PRE-HEATING

To make a cup of good hot Espresso coffee, we recommend you preheat the appliance, the metal funnel, the brewing filter, and the cup so that the coffee flavor cannot be influenced by the cold parts.

1. Remove the water tank and open the tank cover to fill it with desired water, the water level should not exceed the "MAX" mark in the water tank. Then place the water tank into the appliance properly.
2. Set the brewing filter into a metal funnel, make sure the tube on the funnel aligns with a groove in the appliance, then insert the funnel into the appliance from the "LOCK" position, and you can fix them into the coffee maker firmly through turn it anticlockwise until it is at the "CLOSE" position.
3. Place an espresso cup on the drip plate.

4. Then connect the appliance to the power supply source. Make sure the knob is at the horizontal position(off-position).
5. Press the power button "⏻", The power indicator will be illuminated and single/double-cup/steam indicator will be flashing.
6. When single/double-cup/steam indicator stops flashing, it shows the pre-heating is finished.

MAKE ESPRESSO COFFEE

1. Remove the funnel by turning it clockwise, Add ground coffee to the brewing filter with a measuring spoon, a spoon ground coffee power can make about a cup of top-grade coffee, then press the ground coffee powder tightly with the measuring spoon.
2. Set the brewing filter into a metal funnel, make sure the tube on the funnel aligns with a groove in the appliance, then insert the funnel into the appliance as indicating of "LOCK" mark, and you can fix them into coffee maker firmly through turning it anticlockwise until it is at the "CLOSE" position.
3. Then place the hot cup on the drip plate.
4. Select single cup "☕" or double cup "☕☕" according to your demand and then press the corresponding button of the selected function and coffee will be dispensed.
5. The appliance will stop working when the coffee-brewing is finished, and then your coffee is ready now.

WARNING: Do not leave the coffee maker unattended during making the coffee
After finishing making the coffee, you can take the metal funnel out by turning it clockwise, then pour the coffee residue out.

MAKE HOT WATER

1. After finish preheating, turn the knob to "☕☕" position, and then the hot water will dispense from steam wand. When desired amount of hot water is dispensed, turn the knob off. Before making hot water, put a cup under the steam wand.

FROTHING MILK/ MAKE CAPPUCCINO

You get a cup of cappuccino when you top up a cup of espresso with frothing milk.

Note: during making steam, the metal funnel must be assembled in position.

Before frothing milk, release steam for 10 seconds.

Method:

1. Press the steam button "☕☕☕", the steam indicator will be flashing. When steam

indicator stops flashing, the pre-heating is finished.

2. Prepare espresso first with a container big enough according to the part "MAKE ESPRESSO COFFEE".

3. Fill a jug with about 100 grams of milk for each cappuccino to be prepared, you are recommended to use cold milk.

Note: In choosing the size of the jug, it is recommended the diameter is not less than $70\pm 5\text{mm}$, and bear in mind that the milk increases in volume by two times, make sure the height of the jug is enough.

4. Insert the steam wand into the milk for about two centimeters, then turn the knob to the "position, steam will come out from the steam outlet. Froth milk in the way by moving the vessel around from up to down.

Warning: Be sure to operate carefully as the steam may result in scald to the person.

5. When the required purpose is reached, you can turn the knob off.

Note: Clean the steam outlet with a wet sponge immediately after the steam stops generating but take care not to hurt yourself.

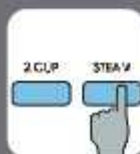
6. Pour the frothed milk into the espresso prepared, now the cappuccino is ready. Sweeten to taste and if desired, sprinkle the froth with a little cocoa powder.

The steam wand can be used to froth milk singly or make hot beverages like drinking chocolate and water

Note: After making steam, you can press the "Single-cup" or "Double-cup" button immediately to brew coffee again. The coffee indicator will flash quickly if the temperature is too high, at this time, you need to reduce the temperature by following the operation below. Turn the knob to the "Hot water" setting, and then the hot water will dispense. When the temperature goes down, the pump will stop automatically and you should turn the knob off, then you can brew coffee again.

If you do not want to brew coffee when the high-temperature warning occurs, you can press the "Single-cup" or "Double-cup" button again to cancel.

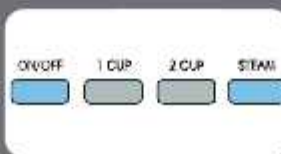
START FROTHING MILK



Press the STEAM button. The machine will start to pre-heat.



Some water may come out of Steam Wand.



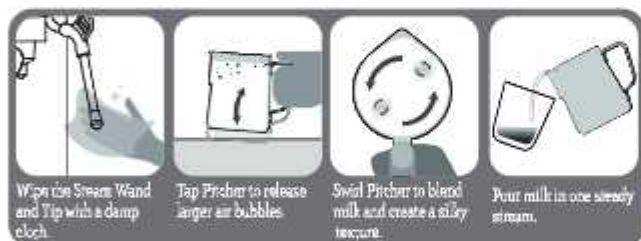
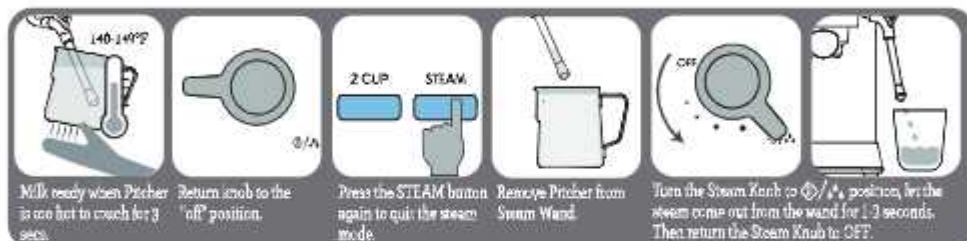
The STEAM button stop flashing and fully illuminate. Ready.



Fill Pitcher with cold milk to just below the bottom of the spout.

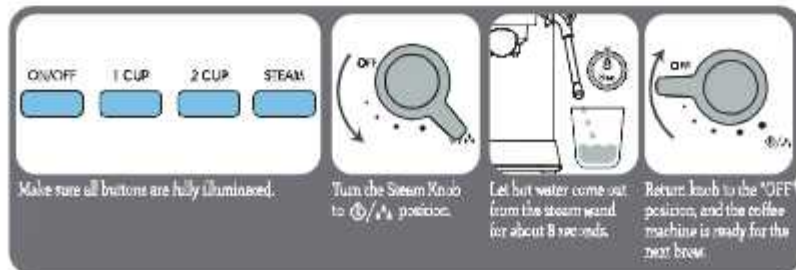


Invert Steam Wand Tip just below the surface of the milk.



NOTE - Do not make coffee immediately after frothing milk. The boiler must be cooling down first. Otherwise, the temperature and the pressure inside the machine are too high, and the machine will be under over-pressure protection. During the over-pressure protection, the machine will not brew coffee, and the 1 CUP and 2 CUP buttons will alternate flashing when you press the 1 CUP or 2 CUP button.

Proceed as below 4 steps to cool down the machine.



USER TIPS

- The taste of espresso depends on the amount and type of coffee used.
- The particular taste of a coffee bean depends on several factors, but its taste and aroma are the result of the roasting process. Coffee beans roasted for a longer time and at higher temperatures are darker in colour. Darker coffee beans release more flavour than lighter ones.
- The espresso machines require a finely ground blend. We recommend to use a grinder mill rather than a blade mill.
- Fresh, quality coffee beans will give you the best possible extraction.
- We recommend storing the coffee in an airtight container, in a cool, dry place, away from heat sources.
- Serve espresso coffee immediately after preparing it.

Grind Setting:					
	Powdered Sugar	Table Salt	Sea Salt	Less Chunky	Chunky
Best for:					
	Turkish Coffee	Espresso	Pour Over & Drip	French Press	Cold Brew

SET THE DISPENSING AMOUNT

1. Dispensing amount of single cup

Hold and press the "Single-cup" button for 3 seconds to enter into the mode of setting the dispensing amount. And then press the "Single-cup" button again, and the coffee starts to dispense and the "Single-cup indicator" flashes at the same time, when the desired amount is got, press the "Single-cup" button again, and the coffee stops dispensing. At that time, the setting for the dispensing amount of a single cup is finished and it will be saved for the next operation. The adjustable dispensing amount of a single cup ranges between 25ml and 60ml.

2. Dispensing amount of double-cup. Hold and press the "Double-cup" button for 3 seconds to enter into the mode of setting the dispensing amount, then follow the operation of setting the dispensing amount of a single cup. The adjustable dispensing amount of double-cup ranges between 70ml and 110ml.

2. To restore factory setting

Simultaneously hold and press the "Single-cup" and "Double-cup" buttons for 3 seconds to recover the factory setting of dispensing amount.

AUTOMATICALLY POWER-OFF FUNCTION

1. After pressing the power button, if there is no operation within 29 minutes, the unit will power off automatically.
2. After pressing the power button, if there is no operation after pumping about 215ml water, the pump will stop automatically.
3. After pressing the power button, if there is no operation after the pump worked for 180 seconds during froth milk, the pump will stop automatically.

CLEAN AND MAINTENANCE

1. Cut off the power source and let the coffee maker cool down completely before cleaning.
2. Clean the housing of the coffee maker with a moisture-proof sponge often and clean the water tank, drip tray, and drip plate regularly then dry them.
Note: Do not clean with alcohol or solvent cleanser. Never immerse the housing in water for cleaning.
3. Detach the metal funnel by turning it clockwise, and get rid of coffee residue inside, then you can clean it with cleanser, but you must rinse it with clear water.
4. Clean all the attachments in the water and dry them thoroughly.

CLEANING MINERAL DEPOSITS

1. To make sure your coffee maker operates efficiently, internal piping is cleaned and the peak flavor of coffee is, the coffee machine needs to be descaled, cleaned, and maintained periodically. descaling warning will be shown when the appliance has cumulatively worked for 500 cycles, at that time, all indicators will flash 5 times, which means that the coffee machine needs to be performed descaling, and then the appliance will go back into normal condition. descaling warning will be shown each time when you turn on the appliance if you do not cancel.
2. Fill the water tank with water and descaler to the MAX level (the scale of water and descaler is 4:1, the detail refers to the instruction of the descaler. Please use "household descaler", you can use the citric acid instead of the descaler (the one hundred parts of water and three parts of citric acid).
3. Press the "Double-cup" button once to make coffee and make hot water for about 100ml. Then turn off the appliance and leave the descaling solution in the appliance for 5 minutes.
4. Turn on the appliance and repeat Step 3 for 3 times.
5. Repeat step 3 for 2 times with tap water at the MAX level (it is not necessary to wait for 5 minutes).
6. After finishing descaling, you need to cancel the descaling warning: Simultaneously hold and press the "Single-cup button""Double-cup button" and "steam button" for 3 seconds.

TROUBLE SHOOTING

Warning	Cause	Corrections
Water leaks from the bottom of coffee machine.	There is much water in the drip tray.	Please clean the drip tray.
	The coffee maker is malfunction.	Please contact the authorized service facility for repairing.
Water leaks out of outer side of filter.	There is some coffee powder on filter edge.	Get rid of them.
Acid (vinegar) taste exists in Espresso coffee.	No proper cleaning after Clearing mineral deposits.	Clean coffee maker per the content in "before the first use" for several times.
	The coffee powder is stored in a hot, wet place for a long time. The coffee powder has degraded.	Please use fresh coffee powder, or store unused coffee powder in a cool, dry place. After opening a package of coffee powder, reseal it tightly and store it in a refrigerator to maintain its freshness.
The coffee Machine cannot work anymore.	The power outlet is not plugged correctly	Plug the power cord into a wall outlet correctly, if the appliance still does not work, please contact the authorized service facility for repairing.

The steam cannot froth.	The white indicator is not illuminated.	Only after the white indicator is illuminated, the steam can be used to froth.
	The container is too big, or the shape does not fit	Use high and narrow cup.
	You have used skimmed milk	Use whole milk or half-skimmed milk
Single-cup indicator and double-cup indicator blinking quickly	Make hot water for 215ml and the knob is not reset The knob is not reset after cooling down	Reset knob to off position
Steam indicator blinking quickly	Make steam for 180 seconds and the knob is not reset	Reset knob to off position
Single-cup indicator or double-cup indicator blinking quickly	Boiler temperature is too high	Turn knob to "☉" position, to start performing cooling operation
Single-cup indicator, double-cup indicator and steam indicator blinking quickly	The knob is not reset to off position, but the machine turned on	Reset knob to "OFF" position
All indicator blinking at the same time for 5 times	Needs descaling	Decalcifying

Do not take apart the appliance by yourself if the cause of failure is not found,
Please contact certified serving center.

Correct Disposal of this product



This marking indicates that this product should not be disposed with other household wastes throughout the EU. To prevent possible harm to the environment or human health from uncontrolled waste disposal, recycle it responsibly to promote the sustainable reuse of material resources. To return your used device, please use the return and collection systems or contact the retailer where the product was purchased. They can take this product for environmental safe recycling.

Dear Customer,

Thank you for purchasing U-Kaffee Espresso Coffee Machine from Hafele. Hafele is dedicated to add more functionality to your daily lives thus making life more easy and comfortable and we continually strive to provide our customers with the best controls in the industry.

If you have any technical questions related to this product or the installation of any of our built in range of appliances, please feel free to call our customer care number at 1800 2666667 or visit our website at www.hafeleindia.com

Warm Regards,

Technical Team

Hafele India Pvt. Limited

CUSTOMER COPY

Customer Name:	_____	<div style="border: 1px solid black; padding: 10px; width: fit-content; margin: auto;"> Dealer Stamp </div>
Customer Address:	_____	
Invoice Number:	_____	
Product Article Code:	_____	
Product Serial Number:	_____	
Date of Purchase:	---/---/--- DD/MM/YYYY	

HAFELE WARRANTY

This Warranty is valid in country of purchase only. This warranty is given by Hafele India Private Limited (HIN).

This appliance is warranted by Hafele India Private Limited to be free from defects in materials and workmanship for a period of 2 years from the date of installation.

You are entitled to have the goods repaired or replaced if the goods fail to be of acceptable quality and the failure does not amount to a major failure. In the event of a minor failure, HIN reserves the right to choose to repair or replace the appliance.

To make a warranty claim, you must be able to supply proof of purchase. In the first instance, you should call our Customer Care - 1800 2666667. HIN will create and retain a computer record of your application. HIN will bear any expenses incurred for warranty claims, excluding the cost of transport of the appliance for service or the service agents travelling costs to and from your home if you live outside the service area of HIN or one of its service agents.

Warranty Terms & Conditions:

- The defective spare part / Parts shall be the sole property of manufacturer and will be collected by the authorised Service Franchisee
- The warranty does not cover any accessories external to the system or supplied by dealer
- The unit will be repaired / part replaced by authorised service franchisee engineer only, warranty will not cover if unauthorized person repair / installation done

- Any defect in the electrical, plumbing, other fitting outside product shall have to be rectified by the purchaser only.
- Hafele shall not be liable for any delay in rectifying the product, in the event of non-availability of components and shall in no way be responsible for any losses, direct or indirect, arising out of the delay, if any
- Warranty shall stand ceased / cancelled if the product is used for any type of commercial purpose
- Defect that have occurred due to causes beyond our control like lighting, abnormal voltage or other acts of God
- The installation site condition that do not conform to the recommended operation condition of the product
- Use of non-recommended consumables causing damage to the product or its performance
- The product is not used in accordance with the instructions mentioned in the instruction / user manual
- The original serial number is removed, obliterated or altered from the product
- The warranty is confined to the first purchaser of the product only
- The warranty is limited to functional parts only., i.e .It includes the electrical and mechanical parts only, plastic, rubber, glass, acrylic parts are not covered in warranty
- In the event of product failure Hafele India will repair the product through its authorised service franchisee only
- The warranty does not include periodic check-ups, maintenance and repair or replacements of parts due to wear and tear.
- In the event of repair / replacement of any part / parts of the product, this warrant will thereafter continue and remain in force only for the unexpired period of the warranty
- The warranty is issued at Mumbai, and courts at Mumbai shall have exclusive jurisdiction over matters covered or flowing from this warranty

DEALER COPY

Customer Name:	_____	<div style="border: 1px solid black; padding: 10px; width: fit-content; margin: auto;">Dealer Stamp</div>
Customer Address:	_____	
Invoice Number:	_____	
Product Article Code:	_____	
Product Serial Number:	_____	
Date of Purchase:	<div style="border: 1px solid black; padding: 2px; display: inline-block;"> ---/---/---- DD/MM/YYYY </div>	

HAFELE WARRANTY

This Warranty is valid in country of purchase only. This warranty is given by Hafele India Private Limited (HIN).

This appliance is warranted by Hafele India Private Limited to be free from defects in materials and workmanship for a period of 2 years from the date of installation. You are entitled to have the goods repaired or replaced if the goods fail to be of acceptable quality and the failure does not amount to a major failure. In the event of a minor failure, HIN reserves the right to choose to repair or replace the appliance. To make a warranty claim, you must be able to supply proof of purchase. In the first instance, you should call our Customer Care - 1800 2666667. HIN will create and retain a computer record of your application. HIN will bear any expenses incurred for warranty claims, excluding the cost of transport of the appliance for service or the service agents travelling costs to and from your home if you live outside the service area of HIN or one of its service agents.

Warranty Terms & Conditions:

- The defective spare part / Parts shall be the sole property of manufacturer and will be collected by the authorised Service Franchisee
- The warranty does not cover any accessories external to the system or supplied by dealer
- The unit will be repaired / part replaced by authorised service franchisee engineer only, warranty will not cover if unauthorized person repair / installation done
- Any defect in the electrical, plumbing, other fitting outside product shall have to be rectified by the purchaser only

- Hafele shall not be liable for any delay in rectifying the product, in the event of non-availability of components and shall in no way be responsible for any losses, direct or indirect, arising out of the delay, if any
- Warranty shall stand ceased / cancelled if the product is used for any type of commercial purpose
- Defect that have occurred due to causes beyond our control like lightning, abnormal voltage or other acts of God
- The installation site condition that do not conform to the recommended operation condition of the product
- Use of non-recommended consumables causing damage to the product or its performance
- The product is not used in accordance with the instructions mentioned in the instruction / user manual
- The original serial number is removed, obliterated or altered from the product
- The warranty is confined to the first purchaser of the product only
- The warranty is limited to functional parts only, i.e. It includes the electrical and mechanical parts only, plastic, rubber, glass, acrylic parts are not covered in warranty
- In the event of product failure Hafele India will repair the product through its authorised service franchisee only
- The warranty does not include periodic check-ups, maintenance and repair or replacements of parts due to wear and tear.
- In the event of repair / replacement of any part / parts of the product, this warrant will thereafter continue and remain in force only for the unexpired period of the warranty
- The warranty is issued at Mumbai, and courts at Mumbai shall have exclusive jurisdiction over matters covered or flowing from this warranty



Mumbai Design Centre:

Haji Mousa Patrawala Ind. (SDBC)
Estate, Near Famous Studio,
Meharaxmi (West), Mumbai - 400 011.
Tel.: 022 8264 7100.

Mumbai Design Centre:

#2 Flinx Building, Opp. Asian Paints,
L.B.S. Marg, Bhandup (West),
Mumbai - 400 078
Tel.: 022 2596 9660/
2596 9787/2594 7305

New Delhi Office & Design Centre:

D-89 - 1st Floor, Conla Phase-I,
New Delhi - 110 020.
Tel.: 011 68574999
Fax: 011-41805482

Bangalore Office & Design Centre:

No.13, Langford Place, Langford Road,
Shanti Nagar, Bangalore - 560 025
Tel.: 080 4132 5118
Fax: 080 4132 6226

Bangalore Hafele Appliances Gallery:

No. 2/1, Shiv Manar, Langford Road,
Shantinagar, Bangalore - 560027
Tel.: 080 - 4142 8336

Hyderabad Office & Design Centre:

SJR Building - # 1-57/89/1 & 1-57/89/2
Opp Allahabad Bank, Gachibowli,
Hyderabad - 500032
Tel.: 040 29657578 / 040 29657588

Kolkata Design Centre:

PS PACE, Premises No. 1/1A,
Mahendra Roy Lane, Topsia,
Kolkata - 700 046
Tel.: 033 40088814 / 033 40089288

Kolkata Office:

Office No. 1001, PS Continental,
10th Floor, 83/2/1 Topsia Road,
Near Vishwakarma Building,
Kolkata - 700046
Tel.: 033-2285 0104 /
033-2285 0105 / 033-2285 0106

Chennai Office & Design Centre:

1st Floor No.24, College Road,
Nungambakkam, Chennai 600 006
Tel.: 044 - 4215 1542
Fax: 044 2446 0922

Pune Design Centre:

Showroom No. 2, Ground floor,
F.P.No. 403, A/2, ICC Trade tower,
Senapati Bapat Marg,
Shivaji Nagar, Pune -411018
Tel.: 020 2563 3301
Fax: 020 2583 9302

Pune Office:

Office No. 12, Vastushree Complex,
Survey No 587, Near Hyde Park,
Gultekdi, Market Yard, Pune - 411 037
Tel.: 020 2426 6264
Fax: 020 2426 6274

Ahmedabad Office:

Hafele India Pvt. Ltd., Office No. 302,
3rd Floor, Shangria Arcade,
Near Shyamal Cross Road, Satellite,
Ahmedabad - 380015
Tel.: +91 79695 66505 / 8866220505

Cochin Office

Jomar Symphony, 5th floor, 48/1744
C34, Chaiikkavattom, North Ponnazhuni,
Vyttila, Cochin - 682019
Tel.: 0484 4026052

Sri Lanka:

Hafele Office and Design Centre:
52, Narendana Gardens
(On Duplication Road), Colombo 04.
Tel.: +94 112 500 501
Fax: 0094 112 500 663

Hafele Design Centre:

448, Galle Road, Rakathakattia,
Moratuwa, Sri Lanka.
Tel.: +94 112 644 600
Hafele Boutique:
752, Peradeniya Road
Kandy, Sri Lanka
Tel.: +94 812 223 338

Bangladesh

Bangladesh Office:
2nd Floor, House - 181, Road - 2,
Mohakhali DCHS, Dhaka - 1206.
Tel.: 01844018431/ 01844018432/
01844018433/ 01844018437.

Bangladesh Design Center:

House - 106, Road - 12,
Block - E, Banani, Dhaka - 1213
Phone: 02-48810380-81

Nepal:

LHS Holdings Pvt. Ltd
Address: Kathmandu-2, Galindhara
Chowk, Nepal.
Mob.: +977 9802338800

Bhutan:

SMART HOMES
Gr Floor, Druk Building (Opp Helipad)
Babesa -Thimpu Expressway, Thimpu
Tel.: +975-2-333419
Mobile: +975-77277615, 17839717,
77114238,1760063,17669840

HAFELE

Hafele India Private Limited

Office No. 3, Building "A", BETA, I Think
Techno Campus, Off J.V.L.R. Opp. KanjurMarg
East, Mumbai - 400 042.
Phone: 022 6142 6100 | Fax: 022 6702 0531

**New Delhi | Kolkata | Cochin | Chennai | Hyderabad |
Bangalore | Mumbai | Pune | Ahmedabad | Sri Lanka |
Bangladesh | Nepal | Bhutan | Maldives**

Toll Free Customer Care No.: 1800 266 6667
Customer Care WhatsApp No.: +91 9769111122
SMS HAFELE to 56670
Info@hafeleindia.com
customercare@hafeleindia.com

